



# VIRTUAL INTELLIGENCE DIRECTORATE

*OMNIA VINCIT SAPIENTIA*

## **Generic Air Force structure**

## **INTREP VID-B-002**

**NOTE:** Virtual Intelligence Service (VIS) is a fictive intelligence organization created to increase immersion in missions and campaigns hosted and organized by the 132nd Virtual Wing, using DCS (Digital Combat Simulator).

Version: 2.1

Published: 2023-05-18



# Introduction

This report is part of the basic intelligence for 132<sup>nd</sup> hosted events.

The aim of this report is help pilots understand the organization and structure of enemy air forces.

The structure in this document is generic and the actual structure in a operation is given as intelligence for that operation.





# Content

[Aircraft roles](#)

[Squadron description](#)

[Squadron composition](#)

[Readiness](#)

[Hierarchy](#)

[Air Force organization](#)



# Aircraft roles

Aircraft	Primary role	Secondary role	Name	Year
MiG-21	Interceptor		FISHBED	1959
MiG-23	Fighter		FLOGGER	1970
MiG-25 PD	Interceptor		FOXBAT A	1970
MiG-25 RBT	Reconnaissance	Bomber	FOXBAT B	1970
MiG-27K	Ground attack		FLOGGER D/J	1975
MiG-29A	Fighter	Ground attack	FULCRUM	1982
MiG-29S	Fighter	Ground attack	FULCRUM-S	1982
MiG-31	Interceptor		FOXHOUND	1981
SU-17 M4	Fighter bomber		FITTER-K	1980
SU-24 M	Attack (A-G)		FENCER-D	1979
SU-24 MR	Reconnaissance		FENCER-E	1980
SU-25	CAS	SEAD	FROGFOOT	1981
SU-25 T	Anti-tank		FROGFOOT	1991
SU-25 TM	Attack		FROGFOOT	2008
SU-27	Fighter	Fighter escort	FLANKER	1985
SU-30	Fighter/attack	Deep interdiction	FLANKER-C	1996
SU-33	Fighter		FLANKER-D	1998
SU-34	Fighter-bomber	Strike, EW/SEAD	FULLBACK	2006
TU-142	ASW	Anti-ship(ASUW)	BEAR	1972
TU-160	Strategic bomber		BLACKJACK	1987
TU-22 M3	Strategic bomber	Anti-ship(ASUW)	BACKFIRE-C	1972
TU-95 MS	Cruise Missiles		BEAR-H	1981
A-50	AWACS		MAINSTAY	1984
AN-26 B	Transport		CURL	1970
AN-30 M	Reconnaissance		CLANK	1968
IL-78 M	AAR		MIDAS	1987
IL-76 MD	Transport		CANDID	1974
YAK-40	VIP transport	EW	CODLING	1968





# Squadron Description

Bomber	A bomber squadron conduct Air Interdiction missions. The aircraft in a bomber squadron have a limited A-A capability for self-protection. A squadron consist of <u>12x aircrafts</u> .
Fighter	The fighter squadrons conduct normal fighter operations such as DCA (CAP) and OCA (Sweep, Escort). A squadron consist of <u>12x aircraft</u> .
Heavy bomber	Heavy bomber squadron conducts long-range strategic attacks, and heavy bombing duties. A squadron consist of <u>6x Aircraft</u> .
Assault	Assault squadrons conduct Close Air Support and Armed Recon missions. A squadron consist of <u>12x aircraft</u> .
Reconnaissance	A reconnaissance squadron is used to gather intelligence about the enemy either visually or electronically. A squadron consist of <u>6x aircraft</u> .
Interceptor	Squadron that is specialized in DCA with the purpose of intercepting incoming enemy aircraft. Squadron consist of <u>12x aircraft</u> .
Tanker	Squadron conducts AAR for other aircrafts. Squadron consist of <u>4x Aircraft</u> .
Transport	A transport squadron is used for transporting supplies, personnel or material. This can either be a logistic operation or a airborne operation. Squadron consist of <u>6x aircraft</u> .
Airborne Early Warning	Squadron conducts Airborne Early Warning, and can be tied into the regions IADS. A Squadron consist of <u>4x Aircraft</u> .
Anti-ship	A Anti-ship squadron conducts maritime patrolling, or conducts Anti Surface Warfare (ASUW) where it attacks ships at sea. Carrier groups is their primary target. A squadron consist of <u>6x aircraft</u> .
SEAD/EW	SEAD/EW squadrons are designed to attack Air Defense of the enemy and will normally support other operations. A squadron consist of <u>x6 aircraft</u> .



# Squadron Composition

Bomber	SU-24 / SU-30 / SU-34
Fighter	MiG-23/MiG-29 / SU-27 / SU-30 /SU-33/J-11B/J-15B/J-16/J-20/J-7D/JF-17
Heavy bomber	TU-160/ TU-22 /TU-95
Assault	MiG-27/ MiG-29/SU-17/ SU-25 / SU-34
Reconnaissance	SU-24 MR/ MiG-25 RBT/ AN-30/H-6J
Interceptor	MiG-21 / MiG-25 / MiG-31
Tanker	IL-78
Transport	AN-26B/IL-76/YAK-40
Airborne Early Warning	A-50/KJ-2000/KJ-600
Anti-ship	TU-22 /TU-142/H-6J
SEAD/EW	YAK-40, SU-25, SU-24, SU-34, SU-30, J-16D





# Readiness

## High readiness:

A squadron with high readiness is combat ready in support of an offensive, or pre-planned need for high readiness. The squadron have conducted preventive maintenance to support combat operations.

A squadron with high readiness have 75% of the aircraft in the squadron ready for missions, with the remaining aircraft undergoing maintenance.

### **Example:**

12x AC: 9x aircraft ready (8-10)

6x AC: 4-5x aircraft ready (3-5)

4x AC: 3x aircraft ready (2-4)

## Normal readiness:

A squadron with normal readiness is combat ready, and are in combat, flying combat operations while doing maintenance of the aircrafts

A squadron with normal readiness have 50% of the aircraft in the squadron ready for missions, with the remaining aircraft undergoing maintenance.

This is the default state of the squadrons.

### **Example:**

12x AC: 6x aircraft ready (5-8)

6x AC: 3x aircraft ready (2-4)

4 x AC: 2x aircraft ready (1-3)

## Low readiness:

A squadron with low readiness is limited combat ready, after a period of combat operations (or other reasons), the squadron need to do maintainance and prepare the aircrafts and pilots for operations. In this phase the squadron only will have a limited amount of aircraft (with crew) available for combat, flying combat operations while doing maintenance of the aircrafts.

A squadron with low readiness have 25% of the aircraft in the squadron ready for missions, with the remaining aircraft undergoing maintenance.

### **Example:**

12x AC: 3x aircraft ready (2-6)

6 x AC: 1-2x aircraft ready (0-3)

4 x AC: 1x aircraft ready (0-2)



# Hierarchy

## Air Force

Highest echelon in a sector or country. Led by a 3-star general. Will normally have 3 Divisions.

## Air Division

A Air Division may have several regiments of various types. Led by a 2-star general.

## Air Regiment

A regiment have the same mission set. Each regiment have 2-4 squadrons with different types of aircraft. Led by a 1-star general.

## Air Squadron

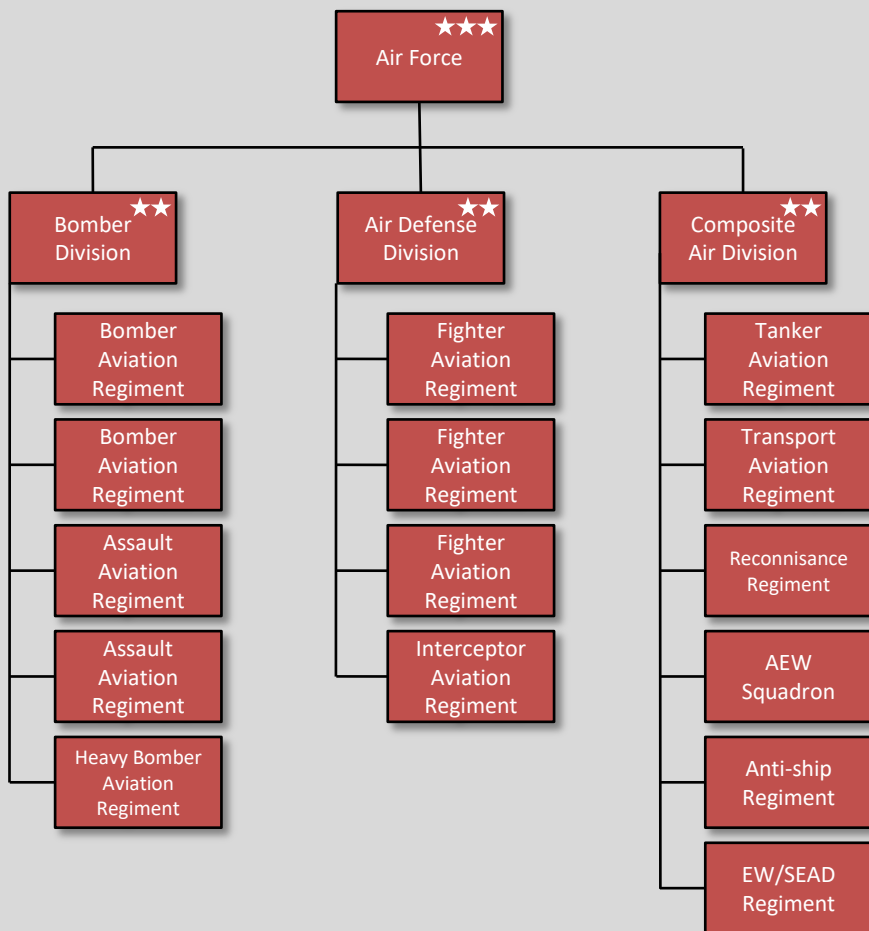
Smallest organization in the Air Forces. Consist of same type of aircraft. Equipped with 4-12 aircraft depending on type of squadron.

The enemy force may have several numbered Air Force's in its structure (it will vary based on the campaign/event). However the numbered Air Forces will have a similar structure

Example: Russia may have the 2<sup>nd</sup> Air Force and 4<sup>th</sup> Air Force in 2 different sectors.



# Air Force Organization



**NOTE:** The size of the various regiments will vary, each regiment will consist of 2-4 squadrons.

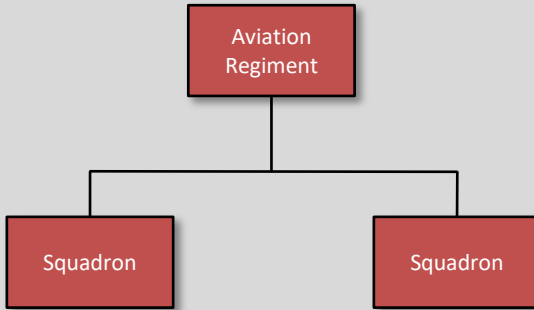
AEW: Airborne Early Warning

EW: Electronic Warfare

SEAD: Suppression of Enemy Air Defense



# Aviation Regiment



All regiments have the same structure. However, the amount of squadrons in a regiment may vary, but will be given in intelligence report for specific operations/areas